

2 / 4 Phase Stepping Motors PS Standard Series

- Six leads for various wiring configuration
- High quality bearings to ensure long life
- Designed for maximum heat dissipation
- Highly cost effective
- Custom configurations available



Specifications

Motor Size (mm)	Motor Part #	Leads	Max. Holding Torque oz-in	Step Angle	Phase(A) Current	Rated(V) Voltage	Rotor g-cm ² Inertia	Motor Weight(g)
17	PS443A (B)	-01	6	15.2	0.95	4	17	200
	PS444A (B)	-02	6	22.2	0.8	6	25	220
	PS445A (B)	-01	6	30.5	1.2	4	36	260
23	PS464A (B)	-01	6	40.2	1.1	4	60	340
	PS466A (B)	-01	6	83.3	1.2	6	125	550
		-12	6	76.3	2.2	3.3	120	550
		-21	6	125	1.5	5.4	220	850
	PS468A (B)	-01	6	150	1.88	6	350	1400
	34	PS496A (B)	-01	6	173	4.5	1.8	560
-02			6	305	1.25	5.5	1100	2600
PS499A (B)		-01	6	305	4.0	3.0	1100	2600
		-02	6	486	2.0	6.0	1800	3600
PS4913A (B)		-01	6	486	4.0	5.0	1800	3600
		-02	6		1.8	12.0		

High Resolution Motors

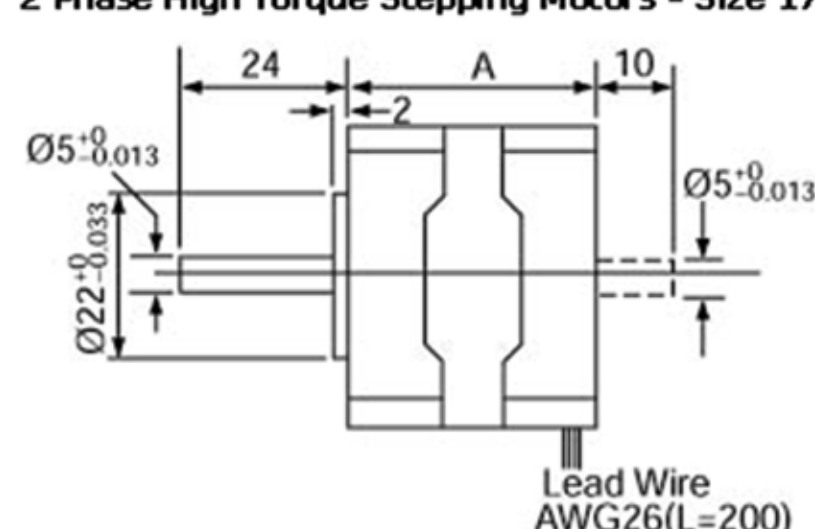
Motor Size (mm)	Motor Part #	Leads	Max. Holding Torque oz-in	Step Angle	Phase(A) Current	Rated(V) Voltage	Rotor g-cm ² Inertia	Motor Weight(g)
23	PS468MA (B)	-21	6	125	1.5	5.4	220	850
34	PS496MA (B)	-01	6	173	4.5	1.8	560	1450
		-02	6	305	1.25	5.5	1100	2600
	PS499MA (B)	-01	6	305	4.0	3.0	1100	2600
		-02	6	486	2.0	6.0	1800	3600
PS4913MA (B)	-01	6	486	4.0	5.0	1800	3600	
	-02	6		1.8	12.0			

Other Specifications

Step Angle Accuracy	+/- 3 min.
Insulation Class	Class B
Insulation Resistance	>100M @500V and normal ambient temp and humidity
Operating Temperature	0 degree C to +50 degree C
Shaft Play	Radial 0.001 in. max. / 1.1 lbs. load Axial 0.003 in. max. / 2.2 lbs. load
Thrust Load	Size 17 13.9 lbs. max. Size 23 24.9 lbs. max.
Overhang Load	Size 34 49.8 lbs. max. Size 17 7.7 lbs. max. Size 23 15 lbs. max. Size 34 24.9 lbs. max.

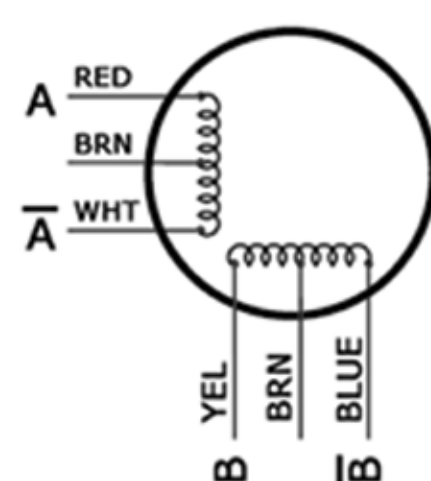
Motor Dimensions

2 Phase High Torque Stepping Motors - Size 17

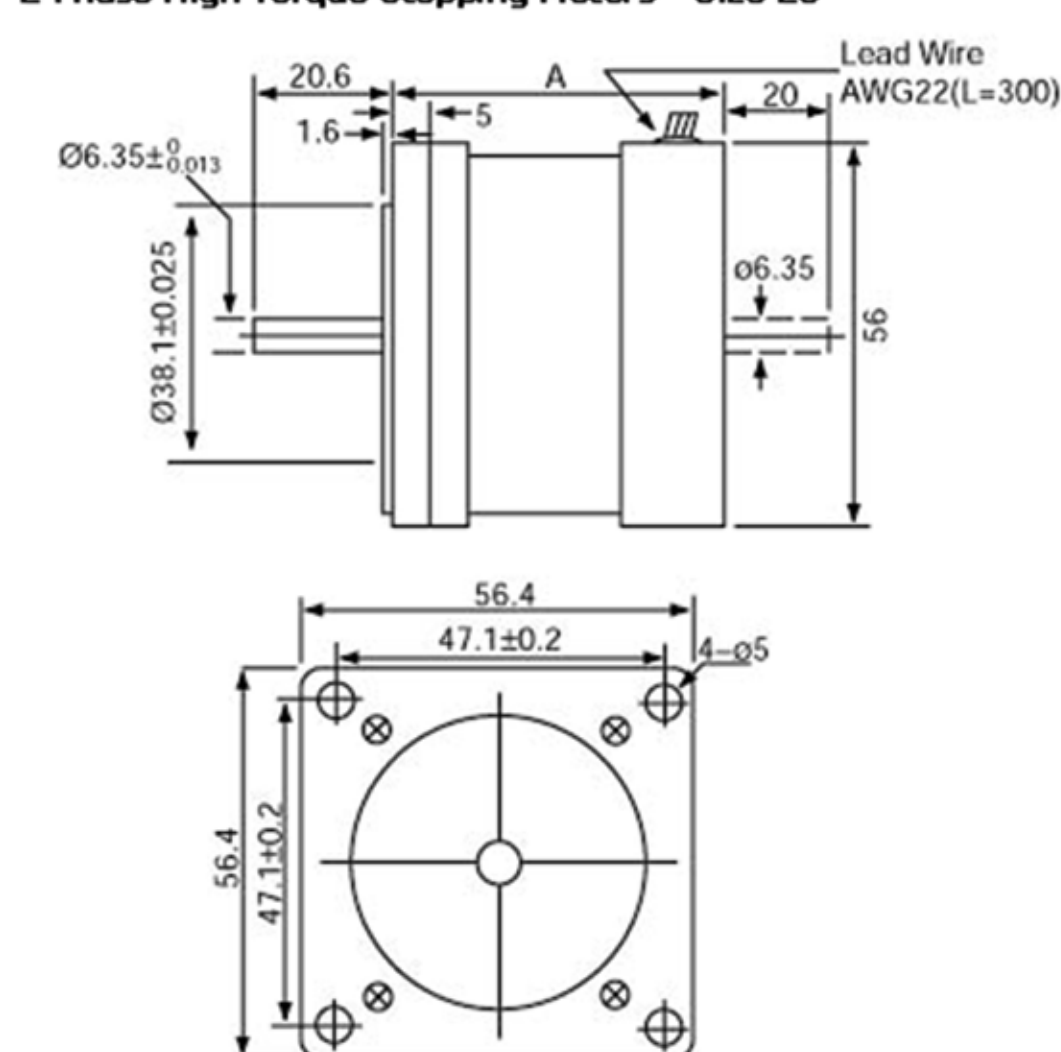


Motor Type A (mm)

PS433A (B)-xx	33
PS444A (B)-xx	39
PS445A (B)-xx	47

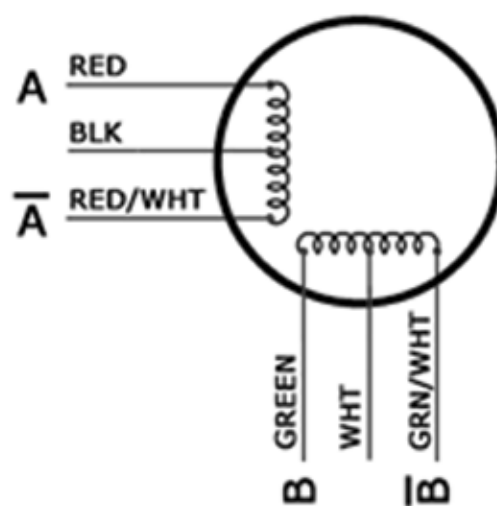


2 Phase High Torque Stepping Motors - Size 23

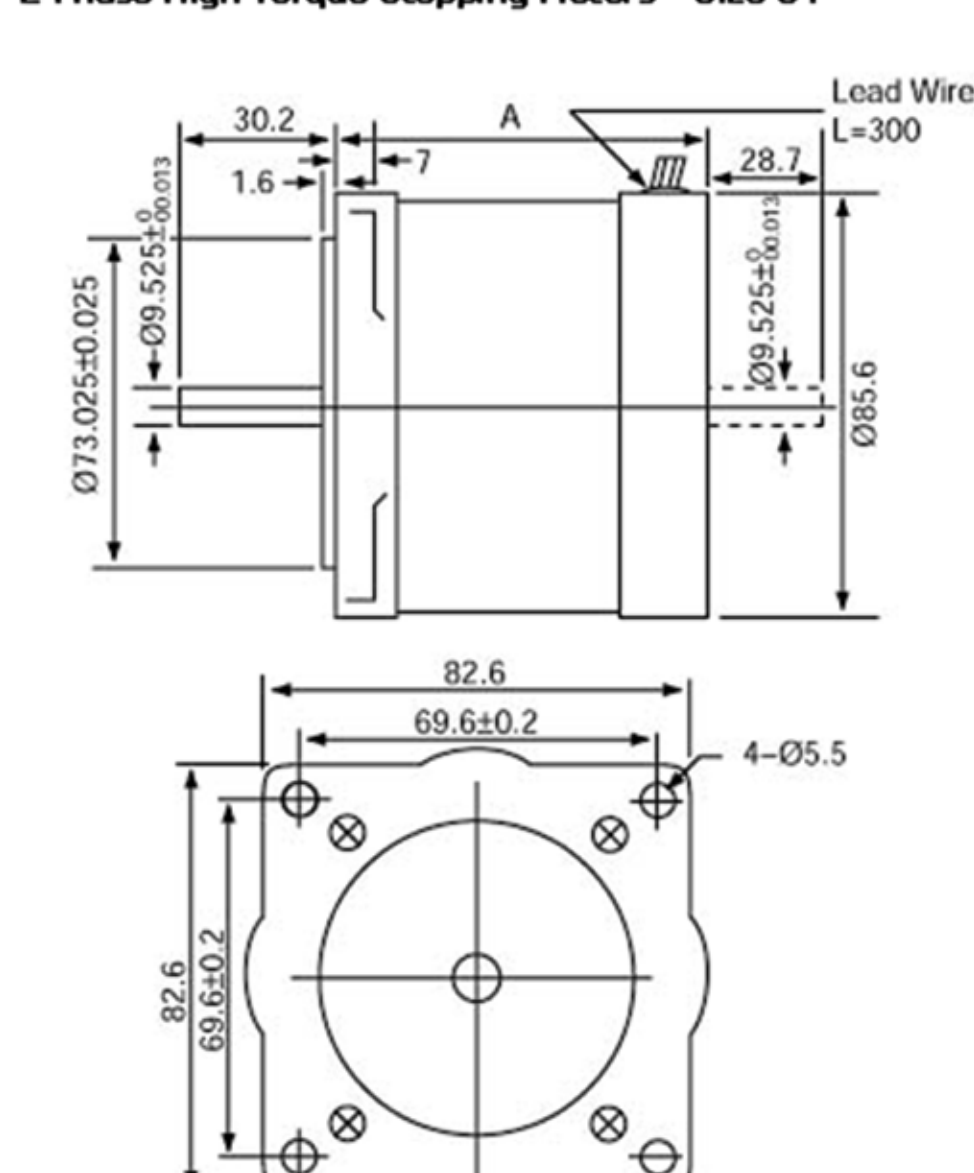


Motor Type A (mm)

PS464A (B)-xx	38.5
PS466A (B)-xx	53.5
PS468A (B)-xx	76.0
PS4610A (B)-xx	101.5



2 Phase High Torque Stepping Motors - Size 34



Motor Type A (mm)

PS496xA (B)-xx	62.5
PS499xA (B)-xx	94.0
PS4913xA (B)-xx	128.0

